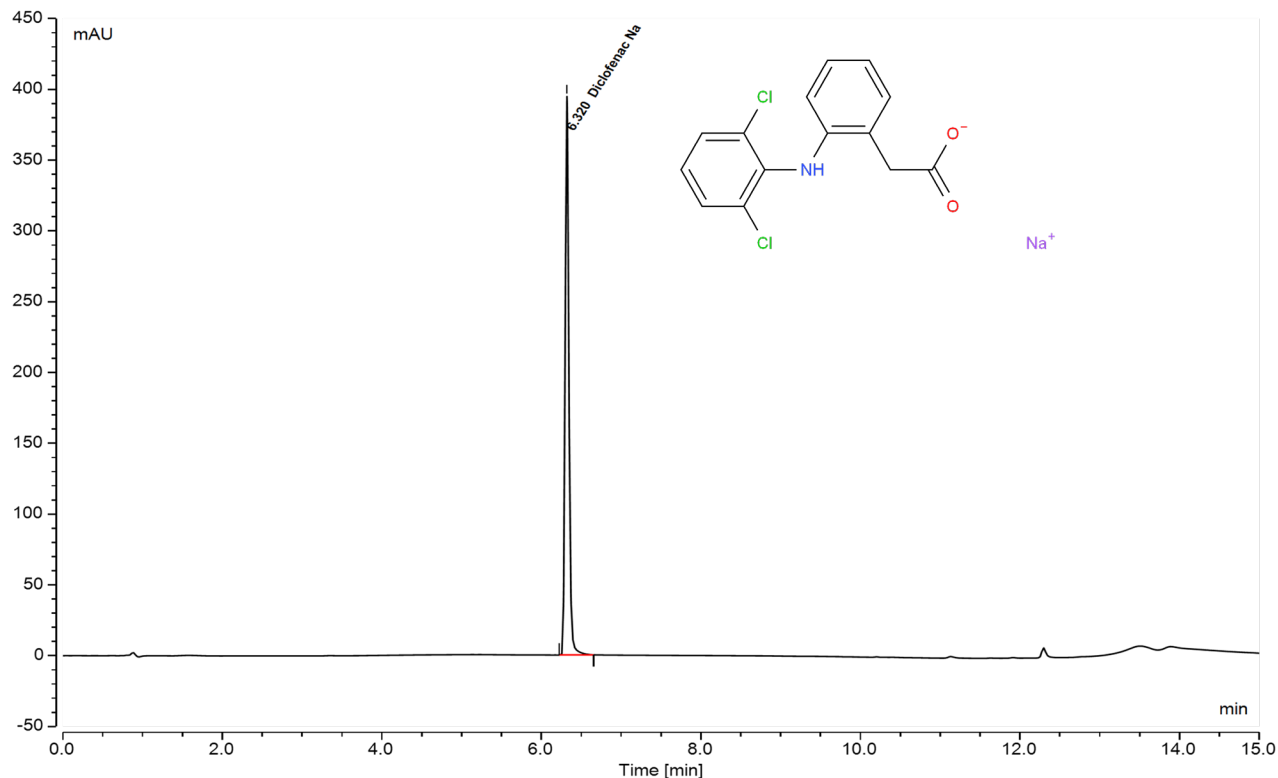




Diclofenac Sodium Delayed-Release Tablets

Endurus[®] C18 TriAlpha Classic 1.9 μ m 100X2.1



Test Condition (As USP)

Column:

Endurus[®] C18 TriAlpha Classic 100x2.1 mm, 1.9 μ m

Injection: 1 μ L

Detection: UV 280 nm

Flow Rate: 0.3 mL/min

Mobile Phase A: 0.7708 g/l ammonium acetate in water. Adjust with acetic acid to pH 5.3 and filter it.

Mobile Phase B: Acetonitrile

Gradient: See Table

Diluent: Acetonitrile:Water (50:50)

Temperature: 35°C

Autosampler temperature: 5°C

Sample preparation:

Dissolve 2 mg of the substance in 10 ml in diluent.

Chromatographic data

Compound	Ret. Time (min)	Resolution	Tailing Factor	Theoretical Plates
Diclofenac Na	6.332	n.a.	1.16	90292

Time (Min)	A	B
0	70	30
0.5	70	30
8.5	5	95
10	5	95
10.01	70	30
20	70	30

Gradient: See Table

To place an order, call +91-90811 21100, or contact your local Force Scientific distributor:

Force Scientific • 207 & 210-213 The Space • Kunal Cross Road • Gotri, Vadodara, GJ 390021 • www.forcescientific.com

Endurus[®] is a registered trademark of Force Scientific.