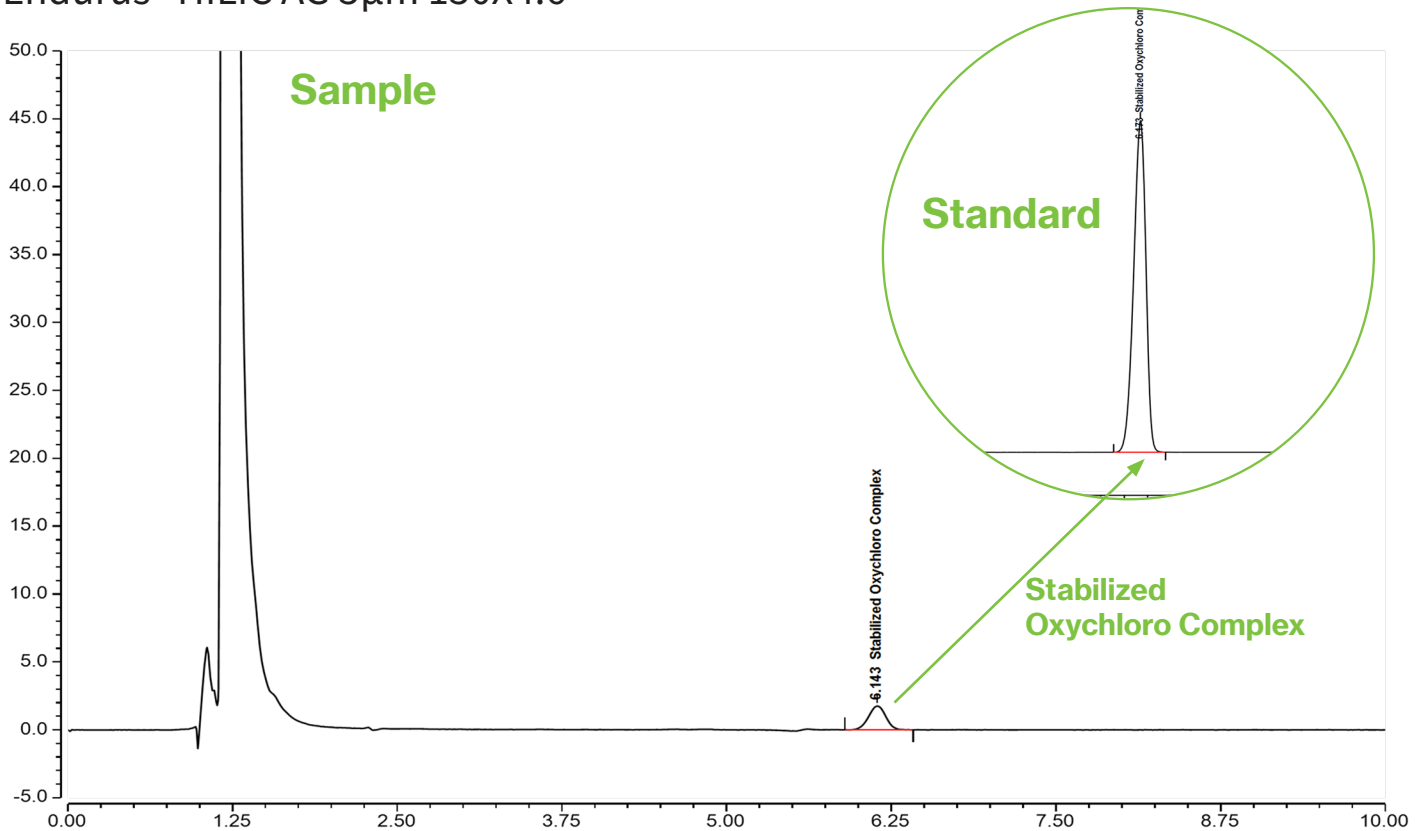




## Estimation Of Oxychloro Complex In Eye Drop

Endurus<sup>®</sup> HILIC AG 5 $\mu$ m 150X4.6



### Test Condition (As Inhouse)

#### Column:

Endurus<sup>®</sup> HILIC AG 150x4.6 mm, 5 $\mu$ m

**Injection:** 10  $\mu$ L

**Detection:** UV 261 nm

**Flow Rate:** 1.5 mL/min

**Buffer:** 6.306 g Ammonium Format in 1000 ml water

**Mobile Phase B:** Acetonitrile :Buffer (70:30)

**Diluent:** Water

**Temperature:** 30°C

Autosampler temperature: 5°C

#### Sample preparation:

100  $\mu$ l of Oxychloro Complex in 1ml water.

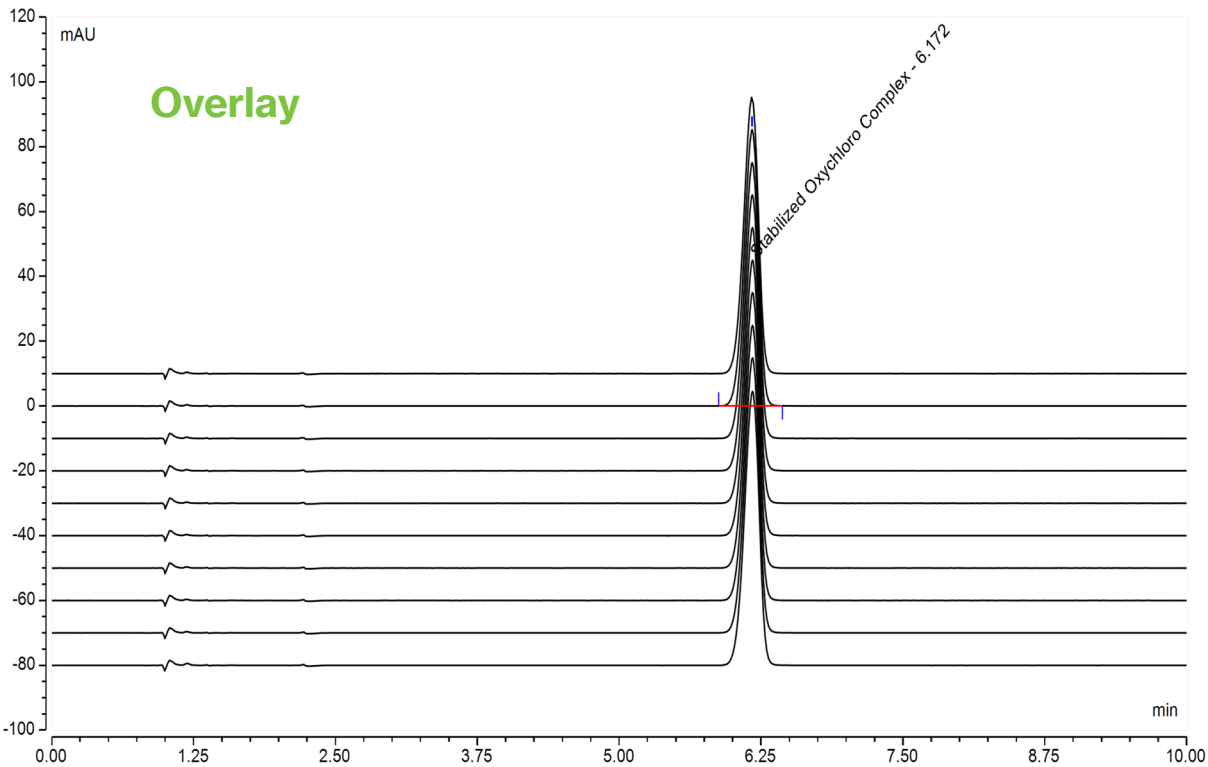
### Chromatographic data

Compound	Ret. Time (min)	Resolution	Tailing Factor	Theoretical Plates
Stabilized Oxychloro Complex	6.172	n.a.	0.9	10475

**Note:** The molecular structure of stabilized oxychloro complex (SOC) is a complex mixture consisting of chlorine dioxide (ClO<sub>2</sub>), chlorite (ClO<sub>2</sub><sup>-</sup>), and chlorate (ClO<sub>3</sub><sup>-</sup>).



## Estimation Of Oxychloro Complex In Eye Drop



### Chromatographic data

Compound	Ret. Time (min)	Sample #	Area $\mu$ AU*sec
Stabilized Oxychloro Complex	6.175	239	773397
Stabilized Oxychloro Complex	6.175	240	775008
Stabilized Oxychloro Complex	6.175	241	773452
Stabilized Oxychloro Complex	6.175	242	774572
Stabilized Oxychloro Complex	6.175	243	773291
Stabilized Oxychloro Complex	6.175	244	773361
Stabilized Oxychloro Complex	6.173	245	774108
Stabilized Oxychloro Complex	6.172	246	772747
Stabilized Oxychloro Complex	6.172	247	774201
Stabilized Oxychloro Complex	6.168	248	773907
	<b>Average :-</b>	<b>6.174</b>	<b>773804</b>
	<b>Stdev :-</b>	<b>0.002</b>	<b>680</b>
	<b>RSD :-</b>	<b>0.04%</b>	<b>0.09%</b>

To place an order, call +91-90811 21100, or contact your local Force Scientific distributor:

Force Scientific • 207 & 210-213 The Space • Kunal Cross Road • Gotri, Vadodara, GJ 390021 • [www.forcescientific.com](http://www.forcescientific.com)

Endurus<sup>®</sup> is a registered trademark of Force Scientific.

ISO 9001  
CERTIFIED